

Control System Upgrade

You can upgrade your old control system to Hanwha Power Systems's latest Touch Plus III.

The modification of the latest Hanwha Power Systems controller applied by touch screen consisted of customized PLC control & Operation manual warrants the stability of the compressor control system and provides the optimized service information for high reliability, operator's convenience by warning right time of quick operation status confirmation, data collection & control, maintenance & overhaul.

Panel upgrade/modification for compressor



Equipment difficult to operate and maintain the compressor due to aging of the Control Panel



Equipment with limitation of compressor control & status confirmation by applying spherical controller of Relay type & Micom type



Equipment difficult to real-time confirmation and collection of data necessary to operate the compressor (Flow rate, Pressure, Temperature, Vibration, etc.)

Why upgrade/modification the control system?



Easy to see monitoring with High definition LCD touch screen



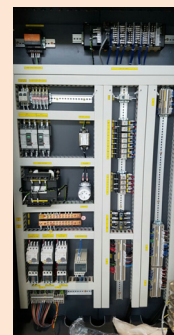
Optimal operational logics with varying required air guaranties : PLC based controller



Machine safety logics and self diagnostic functions

Reference of control system upgrade

- Petro-chemical
- Automobile
- Air Separation
- Power generation
- Etc.



BEFORE

AFTER

TOUCH PLUS III

High Performance & Best Quality PLC Control

Our Touch Plus III is the latest control system can be applied to all makes of centrifugal compressors.



Maximize User Convenience

- Compact size control panel :
(STD) 700 X 1350 X 300, (Opt) 840 X 1850 X 340 & 900 X 1800 X 400
- Human machine interface design with superior operability and visibility.
- User friendly access by touch screen and USB flash drive support for data logging.
- Real time maintenance messaging
- Easy and intuitive UI design.
- Status indication through icon and animation.
- Logging of alarm and trip event.

High Performance

- Faster program execution time.
- Faster floating point trigonometric.
- Huge data memory capacity.
- Ensure maximum TR1) by optimal surge margin.
- Auto-dual/Precise constant pressure control.

High-Performance, High-Reliability, High Capacity, Programmable Logic Controller

- Implementation of high-speed performance.
- High flexibility provided
 - Expansion of program memory : 20K step
 - Open architecture : Various networks (EtherNet/Modbus) supported.

Control System Ensures Reliability and Stability

- Compliance EMC (electromagnetic compatibility)
International standards : CE, RE, CS, RS, ESD, Surge, Burst (CISPR 11 class A, IEC 61000-4)

High-Resolution Color LCD Touch Screen Panel

- Touch screen size : (STD) 7" wide, (Opt) " wide
- Resolution/Color : 7" TFT 800x480 / 65k color

We recommend to replace the old PLC with the modern type



Please contact local aftermarket office for ordering and details

Local office | Find at <http://www.hanwhapowersystems.co.kr>

Headquarter | Korea / TEL 055.260.2796, 055.260.2894 / E-Mail compressor@hanwha.com

